

STATE OF NORTH CAROLINA
DEPARTMENT OF TRANSPORTATION
HIGHWAY DIVISION 6

PLANS
Let Date: March 3, 2021

CONTRACT ID: DF00276

TIP NO.: -----

FEDERAL AID NO.: STATE FUNDED

WBS ELEMENT NO.: 2021CPT.06.09.10092.1

ROUTE NO.: NC 210

LOCATION: FROM NC 53 TO US 701

COUNTY: BLADEN

TYPE OF WORK: ASPHALT SURFACE TREATMENT – DOUBLE SEALS

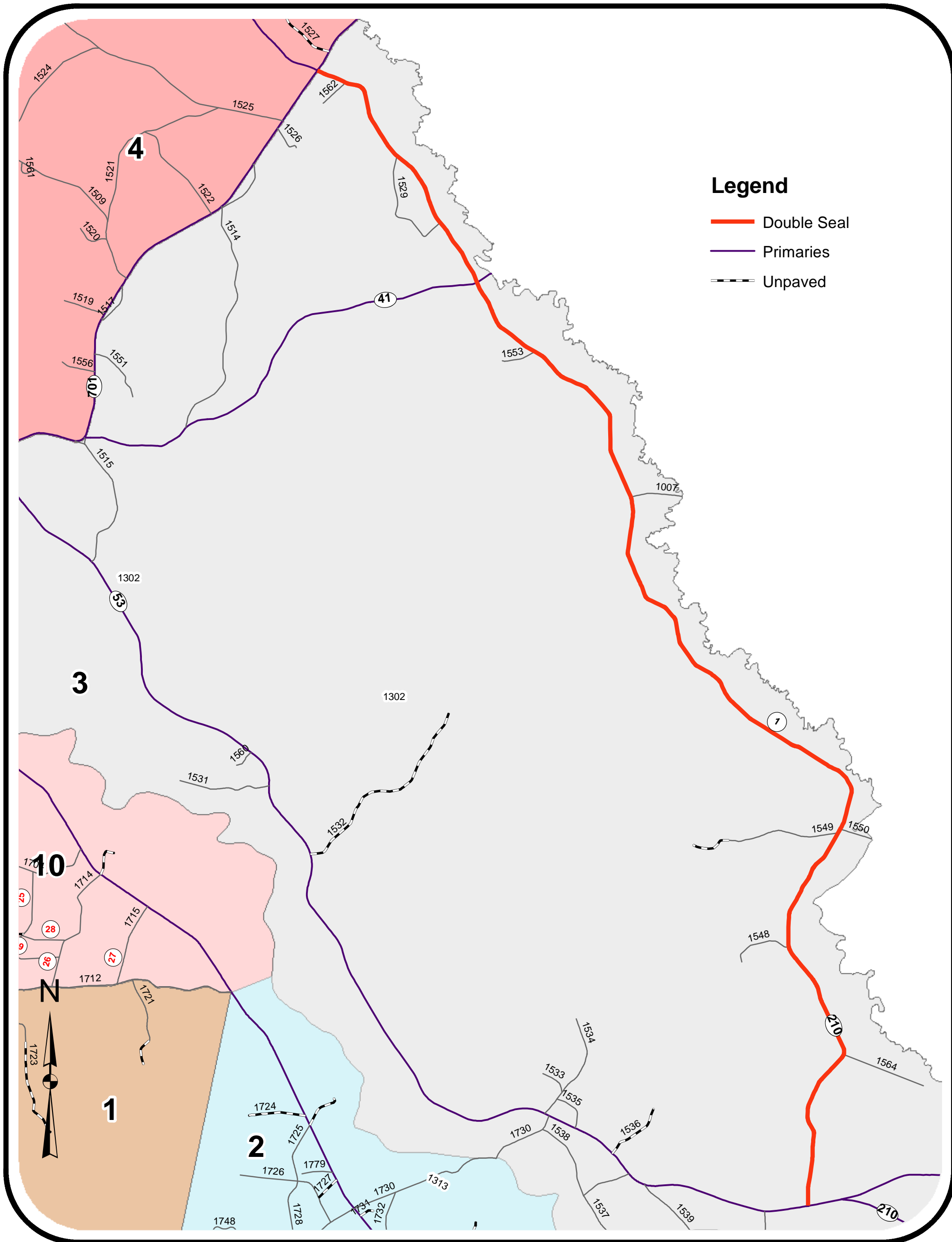
LENGTH OF PROJECT: 24.608 MILES

**This electronic collection of documents is provided
for the convenience of the user
and is Not a Certified Document –**

**The documents contained herein were originally issued
and sealed by the individuals whose names and license
numbers appear on each page, on the dates appearing
with their signature on that page.**

**This file or an individual page
shall not be considered a certified document.**

2021 Bladen County Contract BST



Date: 1/21/2021
 Contract #: DF00276
 WBS: 2021CPT.06.09.10092.1

Division : 6
 County: Bladen
 Description: AST - Double Seals

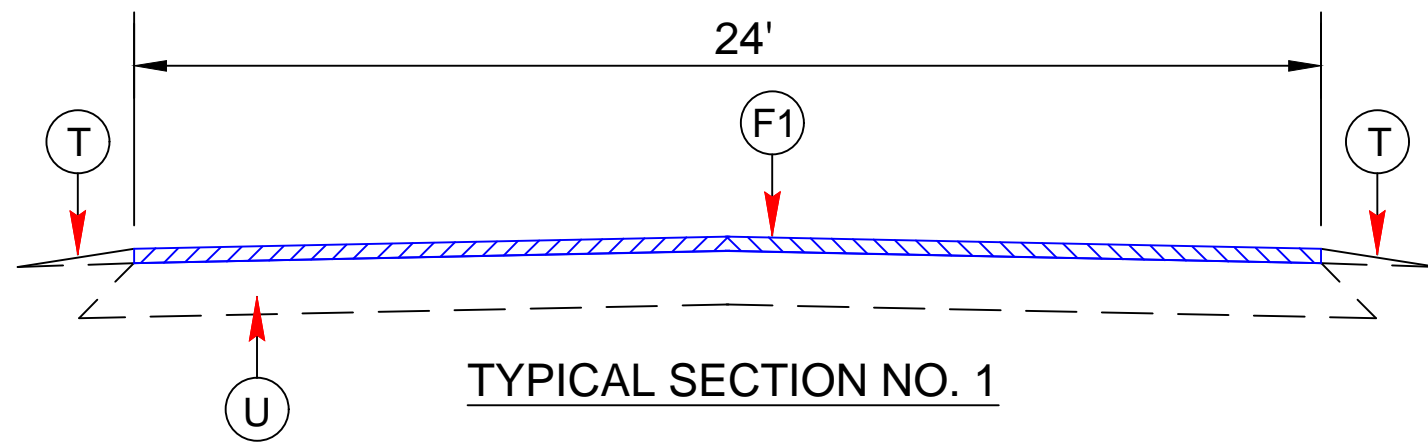
Map	Route	From	Begin MP	To	End MP	CL Length (Mile)	Width (Ft.)	Yardage + 10% (SY)	Emulsion (GAL)	WZ Signs (SF)	Treatment
1	NC 210	NC 53	4.300	US 701	28.908	24.608	24	381,129	209,621	1,434	Double
TOTALS:						24.608		381,129	209,621	1,434	

Schedule of Quantities

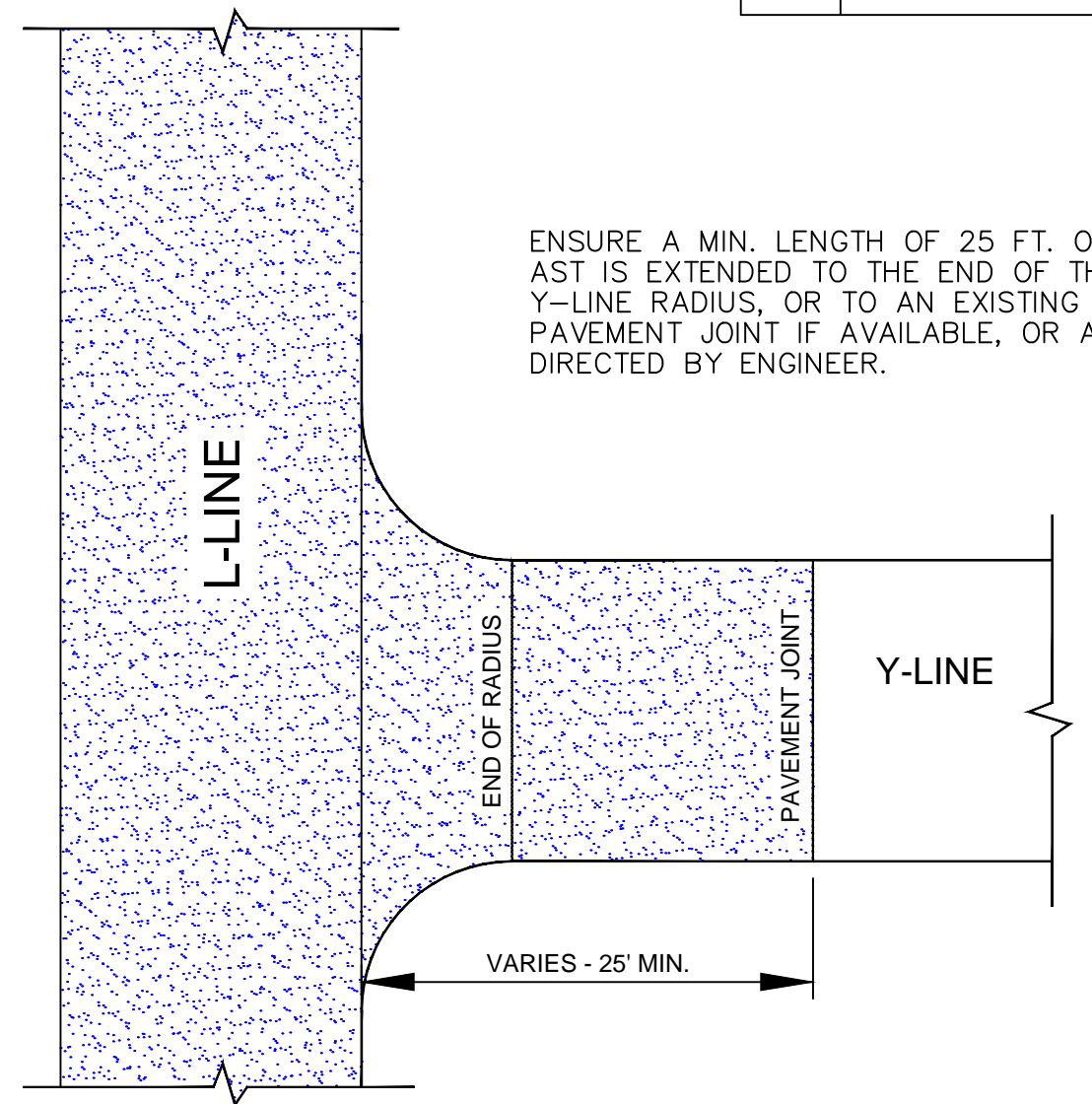
Date: 1/21/2021
 Contract #: DF00276
 WBS: 2021CPT.06.09.10092.1

Division : 6
 County: Bladen
 Description: AST - Double Seals

Map	Route	From	Begin MP	To	End MP	CL Length (Mile)	Width (Ft.)	Yardage + 10% (SY)	Emulsion (GAL)	WZ Signs (SF)	Treatment
1	NC 210	NC 53	4.300	US 701	28.908	24.608	24	381,129	209,621	1,434	Double
	TOTALS:					24.608		381,129	209,621	1,434	



PAVEMENT SCHEDULE	
F1	DOUBLE SEAL PLACED ACCORDING TO THE SPECIAL PROVISIONS
T	EXISTING SHOULDER
U	EXISTING ASPHALT



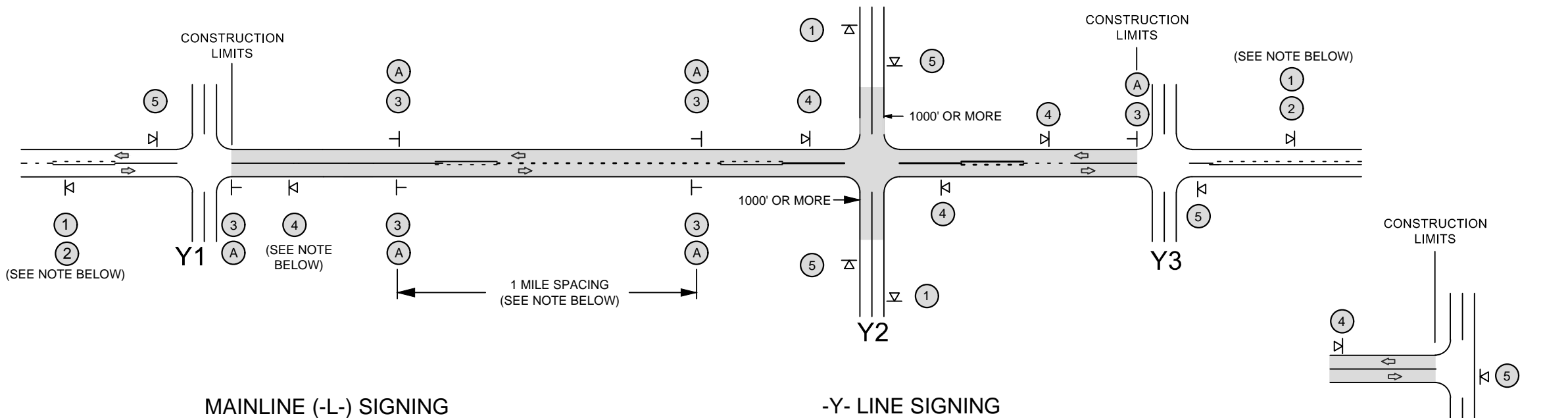
ENSURE A MIN. LENGTH OF 25 FT. OF AST IS EXTENDED TO THE END OF THE Y-LINE RADIUS, OR TO AN EXISTING PAVEMENT JOINT IF AVAILABLE, OR AS DIRECTED BY ENGINEER.

DETAIL 1
Y-LINE INTERSECTION TREATMENT

SIGNING FOR ASPHALT SURFACE TREATMENT

LEGEND

- PORTABLE SIGN
- STATIONARY SIGN
- DIRECTION OF TRAFFIC FLOW



MAINLINE (-L-) SIGNING

-Y- LINE SIGNING

SIGNING NOTES AND PLACEMENT PER DIRECTION	<p>① ROAD WORK AHEAD W20-1 48" X 48"</p> <p>② NEXT XX MILES W7-3aP 24" X 18"</p>	<p>- PLACE 1000' PRIOR TO BEGINNING OF CONSTRUCTION LIMITS. ONLY USED ON -Y- LINES IF RESURFACING LIMITS EXTEND 1000' ALONG -Y- LINE.</p> <p>- SIGN #2 ONLY USED WHEN RESURFACING LIMITS ARE 2 OR MORE MILES IN LENGTH. ROUND UP TO THE NEAREST WHOLE NUMBER. DO NOT USE FRACTIONAL OR DECIMAL NUMBERS.</p>
	<p>③ LOOSE GRAVEL W8-7 48" X 48"</p> <p>UNMARKED PAVEMENT SP 48" X 48"</p>	<p>- ALTERNATE THE FOLLOWING TWO SIGNS:</p> <p>- STARTING WITH "LOOSE GRAVEL" (W8-7) FOLLOWED BY "UNMARKED PAVEMENT".</p> <p>- PLACE INITIALLY AT THE CONSTRUCTION LIMITS AND SPACED 1 MILE APART THEREAFTER.</p> <p>- AT TEE INTERSECTIONS INSTALL INITIALLY 0.5 MILE FROM INTERSECTION AND SPACE 1 MILE APART THEREAFTER.</p>
	<p>A SPEED LIMIT 35 W13-1P 18" X 18"</p>	<p>PLACE INITIALLY AT THE CONSTRUCTION LIMITS AND SPACED 1 MILE APART THEREAFTER. IF NO -Y- LINES EXIST, PLACE 2ND SET 1/2 MILE FROM THE CONSTRUCTION LIMITS AND THEN SPACE 1 MILE THEREAFTER. SPEED LIMIT SIGN MAY BE PLACED ON SAME POST AS LOOSE GRAVEL SIGN, IF DESIRED.</p>
	<p>④ ROAD UNDER CONST SP 13106 48" X 48"</p>	<p>- THESE ARE FOR -Y- LINES THAT ARE "THROUGH" ROADWAYS. DEAD END AND SUBDIVISION ROADS ARE NOT "THROUGH" ROADWAYS.</p> <p>- INSTALL 500' +/- FROM EACH -Y- LINE APPROACH AS SHOWN ABOVE.</p> <p>- FOR MULTIPLE -Y- LINES THAT ARE SEPARATED BY 0.25 MILES OR LESS, TREAT AS A SINGLE UNIT AND INSTALL WITHIN 500' OF EACH APPROACH.</p> <p>- A MAXIMUM OF 2 SIGN SETS PER MILE. DO NOT INSTALL WHEN -Y- LINES ARE WITHIN 0.5 MILES FROM "END ROAD WORK" SIGN.</p>
	<p>⑤ END ROAD WORK G20-2 A 48" X 24"</p>	<p>PLACE 500' FOLLOWING THE END OF CONSTRUCTION LIMITS OR AS SHOWN WHEN WORK ENDS AT A 3-WAY TEE INTERSECTION.</p>

STATIONARY SIGNING NOT REQUIRED FOR THE FOLLOWING -Y- LINE CONDITIONS:

- LESS THAN 1000' OF RESURFACING ALONG -Y- LINE
- SUBDIVISION ROADS
- DEAD END ROADS

WHEN PAVING/CONSTRUCTION ACTIVITIES PROCEED ACROSS AN UNSIGNED -Y- LINE, PORTABLE ADVANCE WARNING SIGNS SHALL BE USED ALONG THE -Y- LINE AS SHOWN BELOW. REMOVE UPON COMPLETION OF WORK.

W20-1 48" X 48"

PLACED 500' IN ADVANCE OF FLAGGER.

W20-7 A 48" X 48"

PLACED 250' IN ADVANCE OF FLAGGER.

NOTE:
IT IS THE CONTRACTOR'S RESPONSIBILITY TO ENSURE THE PROPER PLACEMENT AND LOCATION OF WORK ZONE SIGNING PER THE STANDARD DRAWING. NCDOT HAS THE RIGHT TO INSPECT THE PLANNED LOCATIONS AND REQUIRE ADJUSTMENT BY THE CONTRACTOR, AS NEEDED, OR AS DIRECTED BY THE ENGINEER.

MAPS LESS THAN 2 MILES

FOR AST RESURFACING MAPS WITH CONSTRUCTION LIMITS LESS THAN 2 MILES IN LENGTH, USE A STATIONARY "LOOSE GRAVEL" SIGN AT THE BEGINNING CONSTRUCTION LIMIT FOLLOWED BY AN "UNMARKED PAVEMENT" SIGN MIDWAY THROUGH AND AN "END ROAD WORK" SIGN AT THE END CONSTRUCTION LIMIT.

REVISED - 12-13-2018

NCDOT - DIVISION 6

ADVANCE WARNING SIGNS FOR 2-LANE ROADWAY ASPHALT SURFACE TREATMENT

